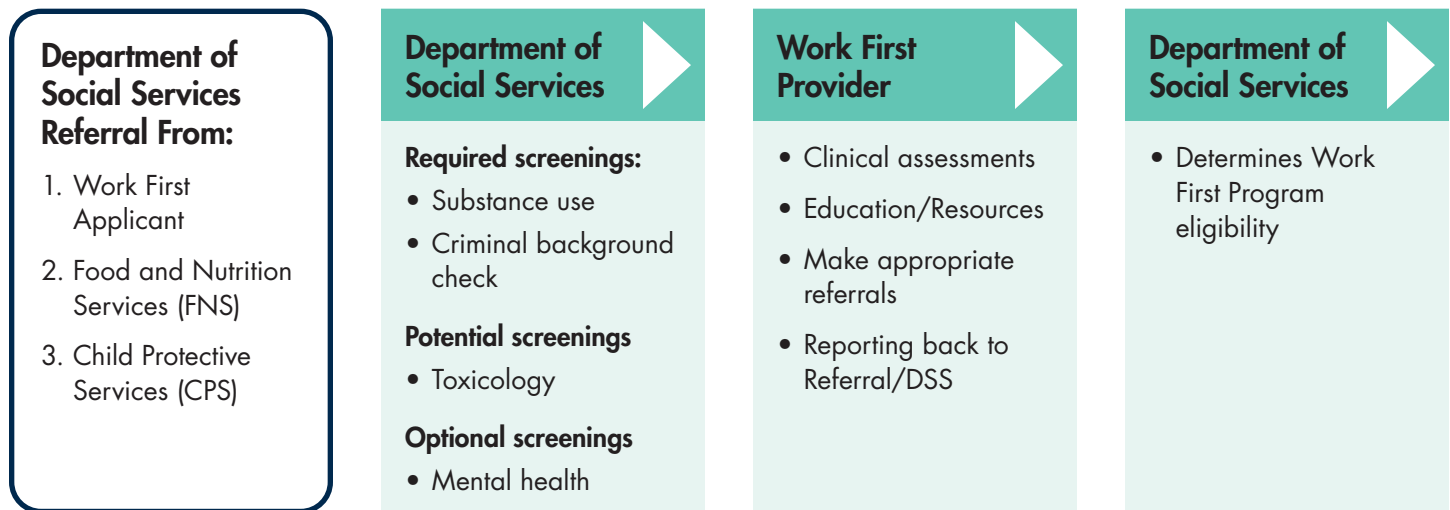


## Work First Providers

# Overview of Responsibilities

Under the Work First Program, QPSA providers play an important role in the early identification of substance use and mental health disorders. Through education, resources, and treatment, your actions impact the families that are and may be facing barriers to employment and connects them to the resources they need to gain economic independence. This is an overview of Work First Provider Responsibilities under the [North Carolina General Statute 1081A-29.1](#).

## Referral Process



## Provider Responsibilities

- Provide assessments, education, and resources to applicants
- Accurately complete all clinical documentation
- Collaborate with DSS, Cardinal Innovations, and the State
- Maintain contractual obligations to Cardinal Innovations
- Complete quarterly reporting